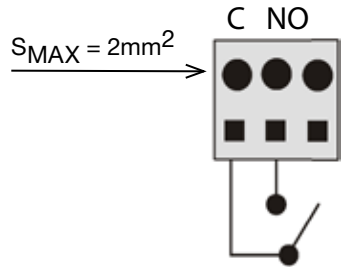


### FAILURE INDICATION

MA3350 DC 2L versions: Periodically check the LED. If power is on and LED is on, unit is good. If power is on and LED is off, the unit must be replaced.

MA3350 DC 2C versions: Periodically check the NO contacts. If they have changed status, the unit must be replaced.

### REMOTE SIGNAL CONNECTION



### Contacts Ratings:

12Vdc, 25mA

**Note:** Contacts will change state if there is an internal failure or if a power loss occurs.

801727 Rev C - 050813

EUROPE (EMEA): +44 (0)1582 723633  
enquiry@mtl-inst.com

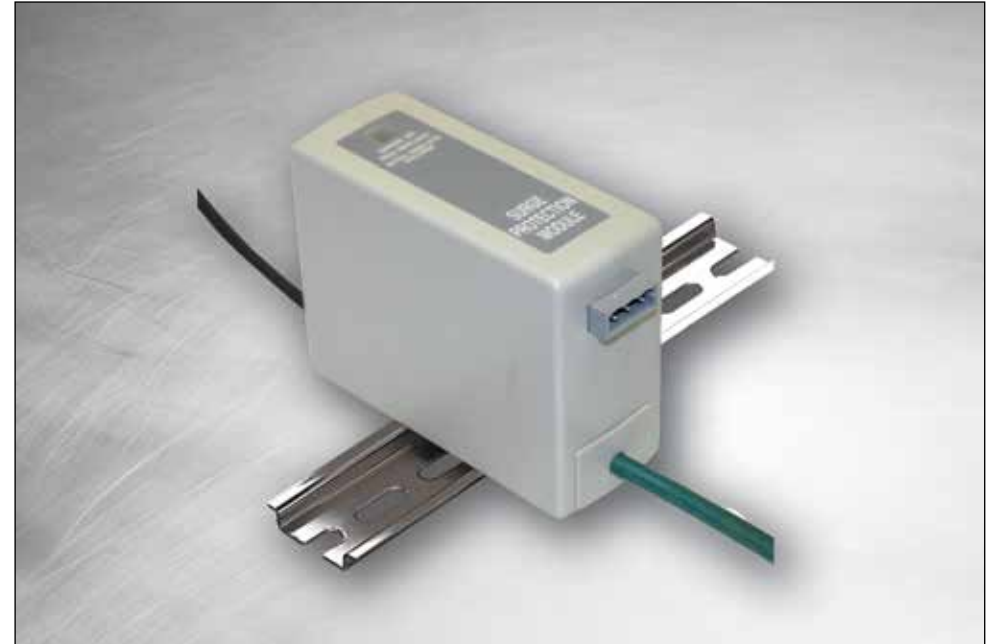
THE AMERICAS: +1 800 835 7075  
csinfo@mtl-inst.com

ASIA-PACIFIC: +65 6 645 9888  
sales@mtlsing.com.sg



## MA3350 DC Series

### Surge Protection Device for DC Power Distribution Systems



### INSTALLATION INSTRUCTIONS/ USER MANUAL

**COOPER** Crouse-Hinds

[www.mtl-inst.com](http://www.mtl-inst.com)

[enquiry@mtl-inst.com](mailto:enquiry@mtl-inst.com)

## SPECIFICATIONS

### Category

EN 61643-11 Type 1 & 2  
IEC 61643-11 Class I & II

### Temperature range

-40 C° - +80 C°

### Lead cross section

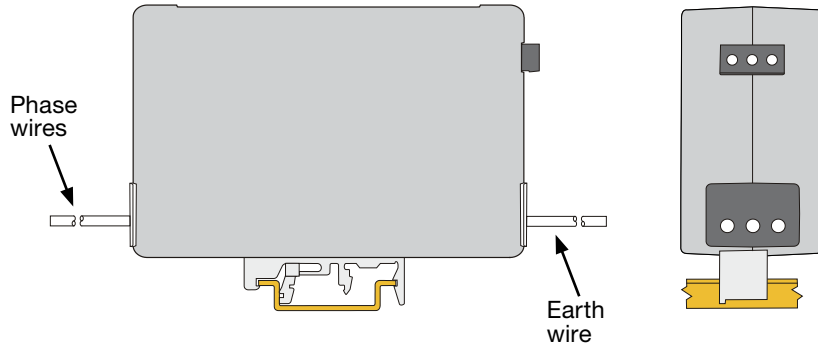
3mm<sup>2</sup> (#12 AWG)

### Mounting EN 60715

35mm top hat

### Dimensions DIN 43880

1 TE



## MOUNTING

- Mounting of overvoltage arresters must be carried out by qualified personnel only.
- Overvoltage arresters must be installed in compliance with national regulations and consideration of protection conditions (IEC 60364-5-534).
- Overvoltage arresters can be damaged if exposed to electrical loading which exceeds the values given in the table.
- Unauthorized intervention within the arrester is not permitted and invalidates the guarantee.

## HANDLING AFTER EXPIRATION OF LIFE EXPECTANCY

The product can be taken apart and the plastic and metal parts recycled in compliance with local regulations.

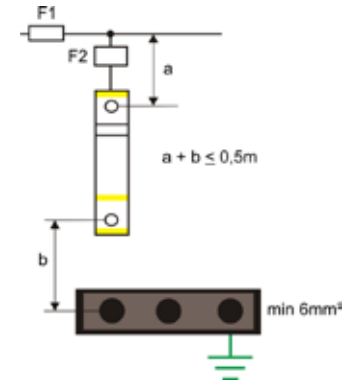


## BACK-UP FUSE

None required. If back-up fuse is desired, use the following table.

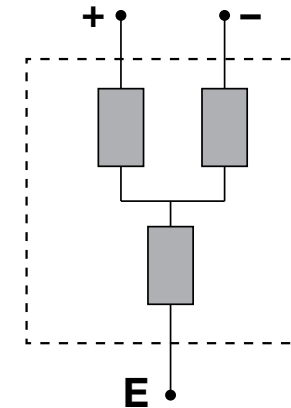
F1	F1 > 100A gL → F2 = 100A gL
	F1 ≤ 100A gL → F2 : not installed

## INSTALLATION



## SPD CONNECTIONS

CAUTION: Verify voltage and earthing configuration of this product; match the voltage and earthing configuration of the installation.



## CONNECTING DETAILS

- Mount the MA3350 to the DIN rail close to the connection points.
- Connect the red & black wires to the applicable supply terminals.
- Connect the ground (earth) wire to the supply ground (earth) buss.