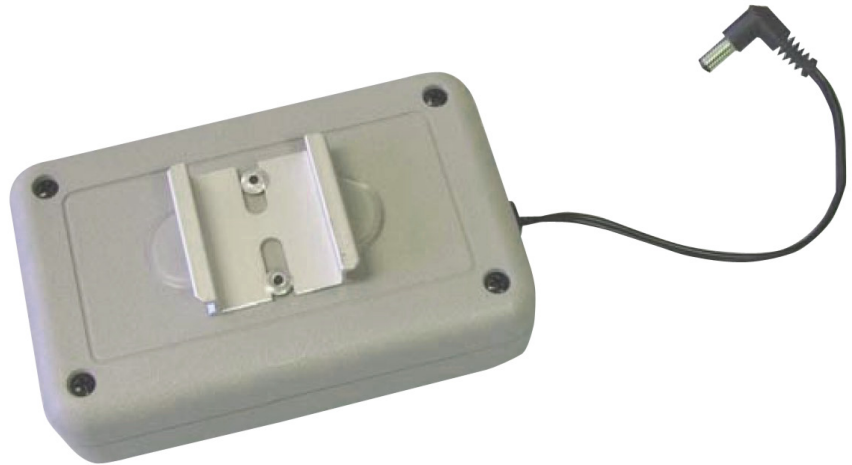




# FCS - A11

battery pack for F11 Power Hub

- convenient battery power for remote operation
- portable demonstration use
- up to 28 hours of power
- DIN-rail mount for F11 Power Hub
- contains 3 x 9V batteries (user replaceable)



The **Relcom FCS-A11 Battery Pack** is an accessory for the Relcom Power Hub. It allows the Power Hub to be used in remote areas where AC power is not available.

**In this way Fieldbus devices may be powered and configured** before the entire Fieldbus system is ready. This can help streamline the time critical commissioning process.

**Battery power for a Power Hub** is also useful for a portable demonstration system. The Battery Pack contains three (3) user replaceable 9V Alkaline batteries that will supply power for two (2) Fieldbus devices for about 14 hours (or one device for about 28 hours).

**A short piece of DIN Rail** is fixed to the Battery Pack so that the Power Hub may be attached to it. This makes a convenient package for easy user mobility.

**Power is transferred from the Battery Pack** to the Power Hub with a short DC Cable. This cable is plugged into the Power Hub instead of the Wall Transformer that comes with the Power Hub. The cable must be unplugged to prevent draining the battery when it is not in use.

## SPECIFICATION

**Battery life (load dependent)**

14 hours (@40mA)\*

**Maximum current**

100mA

**Overload protection (internal)**

100mA resettable fuse

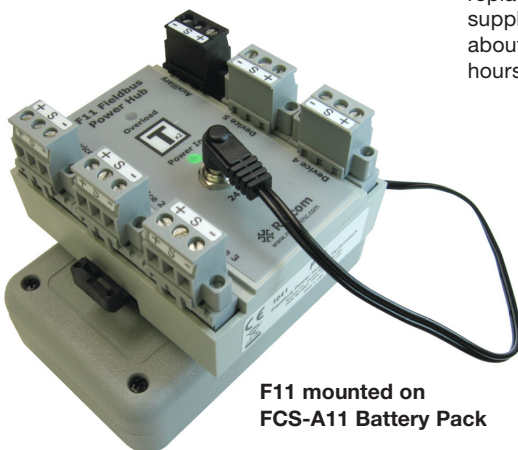
**Output Voltage**

18-29V DC

**Temperature Range**

0 to +50°C

\* Depends on battery characteristics and ambient temperature.



F11 mounted on FCS-A11 Battery Pack



EUROPE (EMEA): +44 (0)1582 723633  
enquiry@mtl-inst.com

THE AMERICAS: +1 800 835 7075  
csinfo@mtl-inst.com

ASIA-PACIFIC: +65 6 487 7887  
sales@mtlsing.com.sg

EPS FCS-A11 Rev1 050511