

# MTL Tofino™ Netconnect LSM

## Secure remote configuration



### Secure remote discovery, configuration, and verification of MTL Tofino devices.

The MTL Tofino Netconnect LSM lets the MTL Tofino Configurator and the MTL Tofino Security Appliance communicate securely over any network. This allows you to discover unconfigured MTL Tofino Security Appliances on the network, and apply and verify their configuration—all from your PC without having to physically visit the hardware devices in the field.

The Discovery feature lets you find the MTL Tofino Security Appliances on your network that were installed straight out of the box. Field technicians don't need to enter an IP address or set any dip switches. MTL Tofino Discovery works over any IP-based network, including wide area networks and routed LANs.

Once the configurations for a group of MTL Tofino Security Appliances are defined in the MTL Tofino Configurator, the NetConnect LSM lets you securely transfer those configurations to the devices in the field. The Verify command lets you record and verify the configuration of any MTL Tofino security Appliance, ensuring that the data in the hardware matches all information in the software database.

### Saves you money through:

- Easy and reliable remote configuration of your MTL Tofino Security Appliances.
- Simple validation and auditing of all field configurations.
- Reduced maintenance and training costs for field installation of firewalls.

### Unique capabilities:

- Stealthy IP address-free discovery and configuration over routed networks.
- Configuration and validation of multiple MTL Tofino Security Appliances.
- Simultaneous configuration and verification ensures system compliance.
- Automatic downloading of log and diagnostic files.
- Secure auditing of all changes to firewall configurations.

### Typical applications

- Configuration of devices in remote locations, such as off-shore platforms and electrical substations.
- Configuration in sites where skilled security staff are unavailable.
- Compliance to standards like NERC CIP that require confirmation of firewall configurations in the field.

# MTL Tofino™ Netconnect LSM

December 2015

## FEATURES & SPECIFICATIONS

<b>Automatic discovery</b>	Discover unconfigured MTL Tofino Security Appliances on any IP-based network, including networks with existing routers or firewalls.
<b>Secure communication</b>	<ul style="list-style-type: none"> <li>• Uses secure SSH encryption technology to configure each MTL Tofino Security Appliance.</li> <li>• Unique keys generated for every MTL Tofino Security Appliance.</li> </ul>
<b>Multiple device configuration</b>	Select one or many MTL Tofino Security Appliances to simultaneously apply the device configurations across a plant.
<b>Verification</b>	Remote verification of firmware versions and configurations, including version tracking and checksum validation.
<b>Log and diagnostic file download</b>	Remotely download event log and diagnostic files over the network.
<b>Stealth addressing</b>	Uses MTL Tofino's patented IP address-free communications technology.
<b>Operating modes</b>	All standard MTL Tofino modes supported: <ul style="list-style-type: none"> <li>• Test: all traffic allowed; alerts generated as per user rules.</li> <li>• Operational: traffic filtered and alerts generated as per user rules.</li> </ul>
<b>Upgrading firmware</b>	Upload new firmware to MTL Tofino Security Appliances over the network.
<b>Auditing</b>	<ul style="list-style-type: none"> <li>• Automatic auditing of user activity, including configuration changes to either the database or the in-field MTL Tofino Security Appliances.</li> <li>• All configurations signed to detect tampering or out of sync systems.</li> </ul>
<b>System requirements</b>	<ul style="list-style-type: none"> <li>• MTL Tofino security Appliance.</li> <li>• MTL Tofino Configurator.</li> <li>• MTL Tofino Firewall/Event Logger LSM.</li> </ul>
<b>Ordering information</b>	Part number: <b>9522-NET</b> Name: <b>MTL Tofino™ Netconnect LSM</b> Visit: <b>www.mtl-inst.com/tofino for ordering info for all products.</b>

The **MTL Tofino™ Netconnect LSM** is a component of the **MTL Tofino™ Industrial Security Solution**

### MTL Tofino Security Appliance

Hardware platform that creates Plug-n-Protect™ zones of security on control and SCADA networks.



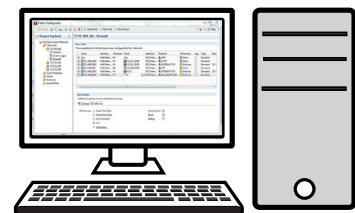
### Loadable Security Modules

Firmware modules that customize the security features of each MTL Tofino SA:

- **Firewall:** Directs and controls industrial network traffic.
- **Modbus, OPC, and EtherNet/IP Enforcers:** Ensure compliance, manage connections, and restrict ICS SCADA commands.
- **NetConnect:** Provides secure remote configuration over any IP-based network.
- **Event Logger:** Reliably logs security events and alarms.

### MTL Tofino Configurator

Software that provides coordinated security management of all MTL Tofino Security Appliances from one workstation or server.



**Measurement Technology Limited,**  
Great Marlings, Butterfield, Luton  
Beds, LU2 8DL, UK.  
Tel: + 44 (0)1582 723633 Fax: + 44 (0)1582 422283  
E-mail: [mtlenquiry@eaton.com](mailto:mtlenquiry@eaton.com)  
[www.mtl-inst.com](http://www.mtl-inst.com)

© 2015 MTL  
All Rights Reserved  
Publication No. EPS NC-LSM rev 1 011215  
December 2015

**EUROPE (EMEA):**  
+44 (0)1582 723633  
[mtlenquiry@eaton.com](mailto:mtlenquiry@eaton.com)

**THE AMERICAS:**  
+1 800 835 7075  
[mtl-us-info@eaton.com](mailto:mtl-us-info@eaton.com)

**ASIA-PACIFIC:**  
+65 6 645 9888  
[sales.mtlsing@eaton.com](mailto:sales.mtlsing@eaton.com)

The given data is only intended as a product description and should not be regarded as a legal warranty of properties or guarantee. In the interest of further technical developments, we reserve the right to make design changes.