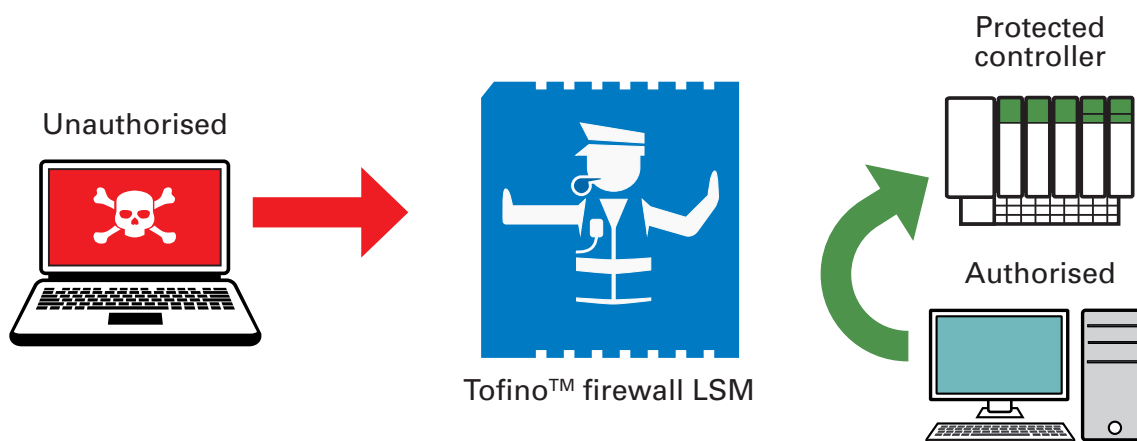


MTL Tofino™ firewall LSM

Directs and controls industrial network traffic



Take control of your network traffic

The vast majority of control networks have little or no isolation between different subsystems. If a device misconfiguration, hardware failure, or virus causes a problem in one part of the network, it can spread throughout the entire network in seconds and bring your whole plant down. Even redundant backup systems can fail simultaneously if their network connections are not protected.

The MTL Tofino Firewall LSM is like a traffic control cop for industrial networks, checking all communications on your control network against a list of traffic 'rules' defined by your control engineers. Any communication that is not on the 'allowed' list will be blocked and reported by the MTL Tofino Firewall. Traffic rules are created using terms and concepts that are already familiar to control specialists. And, the unique 'test' mode of MTL Tofino lets you test your rules without any risk to plant operation.

Saves you money through:

- Simplifying compliance to safety and security standards.
- Reduced down time and production losses.
- Improved system reliability and stability.

Unique capabilities:

- Traffic rules are defined by your control team, specifying which devices may communicate using what protocols.
- Rule definition is simple using a graphical drag-and-drop editor.
- Traffic that does not match the rules is automatically blocked and reported.
- Over 125 pre-defined IT and industrial communication protocols.
- Over 180 pre-defined security templates for common controllers, drives, HMIs and network products.
- Pre-defined 'special rules' for advanced traffic filtering and vulnerability protection.

Applications

- Isolate critical devices from threat sources.
- Separate control networks into security 'zones', restricting communications between zones.
- Protect controllers with known vulnerabilities.

FEATURES & SPECIFICATIONS

Protects multiple devices	Master and slave devices are supported, with unique direction and permission settings for each client/server connection.
Filter policy	Deny by default: any network traffic that is not on the 'allowed' list is automatically blocked and reported.
State tracking	Stateful Packet Inspection (SPI).
User-settable options	<p>IP-based protocols:</p> <ul style="list-style-type: none"> • Source device: specific IP address, network, or 'any'. • Destination device: specific IP address, network, broadcast, multicast, or 'any'. • Application protocol: any combination of single, list, and/or range of port numbers. • Direction: incoming, outgoing, bidirectional. <p>Both IP-based and non-IP protocols:</p> <ul style="list-style-type: none"> • Permission: Allow, Deny, Enforce (requires appropriate Enforcer LSM). • Logging: Enabled, Disabled. • Rate limit controls.
Transport protocols	TCP, UDP and non-IP protocols supported.
Configuration method	Simple configuration using the MTL Tofino Central Management Platform (CMP).
Operating modes	All standard MTL Tofino modes supported: <ul style="list-style-type: none"> • Passive: all traffic allowed, no alerting. • Test: all traffic allowed; alerts generated as per user rules. • Operational: traffic filtered and alerts generated as per user rules.
Security alerts	Reports blocked traffic to a syslog server and non-volatile memory on a MTL Tofino Security Appliance.
Certifications	<ul style="list-style-type: none"> • Certified Modbus compliant by Modbus-IDA.
System requirements	<ul style="list-style-type: none"> • MTL Tofino Security Appliance. • MTL Tofino Central Management Platform.
Ordering information	<p>Part number: 9522-FW Name: MTL Tofino™ Firewall LSM Visit: www.mtl-inst.com/tofino for ordering information for all products.</p>

The **MTL Tofino™ Firewall LSM** is a component of the **MTL Tofino™ Industrial Security Solution**

MTL Tofino Security Appliance

Hardware platform that creates Plug-n-Protect™ zones of security on control and SCADA networks.



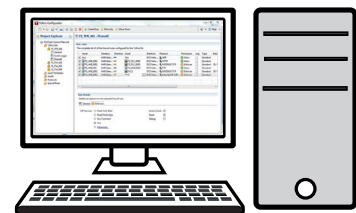
Loadable Security Modules

Firmware modules that customize the security features of each MTL Tofino SA:

- **Firewall:** Directs and controls industrial network traffic.
- **Modbus, OPC, and EtherNet/IP Enforcers:** Ensure compliance, manage connections, and restrict ICS SCADA commands.
- **NetConnect:** Provides secure remote configuration over any IP-based network.
- **Event Logger:** Reliably logs security events and alarms.

MTL Tofino CMP

Software that provides coordinated security management of all MTL Tofino Security Appliances from one workstation or server.



Measurement Technology Limited,
Great Marlings, Butterfield, Luton
Beds, LU2 8DL, UK.
Tel: + 44 (0)1582 723633 Fax: + 44 (0)1582 422283
E-mail: mtlenquiry@eaton.com
www.mtl-inst.com

© 2016 MTL
All Rights Reserved
Publication No. EPS FW-LSM rev 6 210316
March 2016

EUROPE (EMEA):
+44 (0)1582 723633
mtlenquiry@eaton.com

THE AMERICAS:
+1 800 835 7075
mtl-us-info@eaton.com

ASIA-PACIFIC:
+65 6 645 9888
sales.mtlsing@eaton.com

The given data is only intended as a product description and should not be regarded as a legal warranty of properties or guarantee. In the interest of further technical developments, we reserve the right to make design changes.